

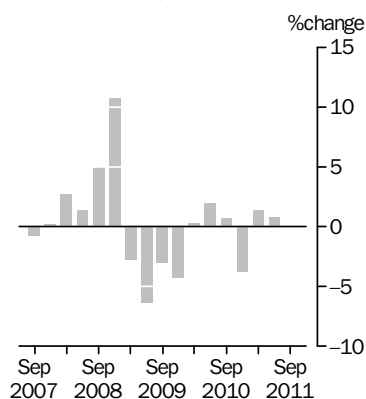
INTERNATIONAL TRADE PRICE INDEXES

AUSTRALIA

EMBARGO: 11.30AM (CANBERRA TIME) FRI 21 OCT 2011

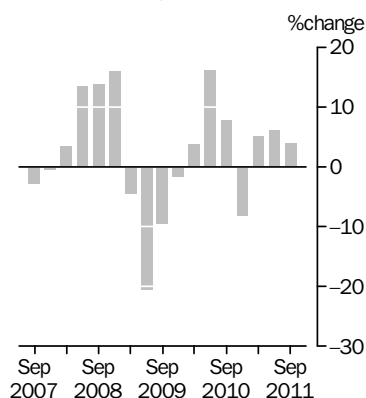
IMPORT PRICE INDEX: all groups

Quarterly % change



EXPORT PRICE INDEX: all groups

Quarterly % change



KEY FIGURES

	Jun Qtr 11 to Sep Qtr 11 % change	Sep Qtr 10 to Sep Qtr 11 % change
Import Price Index all groups	0.0	-1.7
Food and live animals	1.1	-1.9
Beverages and tobacco	-2.0	-4.7
Crude materials, inedible, except fuels	-0.9	0.6
Mineral fuels, lubricants and related materials	-2.7	21.5
Animal and vegetable oils, fats and waxes	-2.8	17.6
Chemicals and related products, n.e.s.	-0.1	-2.4
Manufactured goods classified chiefly by material	1.3	-4.1
Machinery and transport equipment	-0.4	-8.3
Miscellaneous manufactured articles	1.4	-8.5
Commodities and transactions, n.e.s.	14.3	20.0
Export Price Index all groups	4.0	6.6
Food and live animals	-1.1	9.1
Beverages and tobacco	3.0	-6.5
Crude materials, inedible, except fuels	0.6	2.8
Mineral fuels, lubricants and related materials	10.0	12.9
Animal and vegetable oils, fats and waxes	-1.6	10.3
Chemicals and related products, n.e.s.	1.3	3.4
Manufactured goods classified chiefly by material	-0.6	2.3
Machinery and transport equipment	1.5	-6.4
Miscellaneous manufactured articles	0.1	-6.3
Commodities and transactions, n.e.s.	13.8	19.3

KEY POINTS

IMPORT PRICE INDEX

- The Import Price Index recorded no change in the September quarter 2011. Through the year to the September quarter 2011, the Import Price Index fell 1.7%.

EXPORT PRICE INDEX

- The Export Price Index rose 4.0% in the September quarter 2011. Through the year to the September quarter 2011, the Export Price Index rose 6.6%.

INQUIRIES

For further information about these and related statistics, contact the National Information and Referral Service on 1300 135 070.

NOTES

FORTHCOMING ISSUES

<i>ISSUE (Quarter)</i>	<i>RELEASE DATE</i>
December 2011	20 January 2012
March 2012	20 April 2012
June 2012	20 July 2012
September 2012	19 October 2012

.....

REVIEW OF THE PRODUCER AND INTERNATIONAL TRADE PRICE INDEXES

The ABS is currently undertaking a major review of the Producer and International Trade Price Indexes. An *Information Paper: Review of the Producer and International Trade Price Indexes, 2011* (cat. no. 6427.0.55.003) was released on 2 September 2011. Although written submissions closed on 14 October 2011, general inquiries and comments may still be lodged with the contact person, Mr Michael Abbondante on +61 2 62527124 or email ppi.review@abs.gov.au.

CHANGES IN THIS ISSUE

Both the Import Price Index and the Export Price Index data have been reweighted for the September quarter 2011. This is in line with the ABS policy of reweighting these indexes annually for the September quarter, as explained in paragraphs 8–10 of the Explanatory Notes. The new weighting patterns are provided as an Appendix to this issue. As a consequence of the annual reweighting, the points contribution data for the June quarter 2011 shown in Tables 2, 8 and 17 differ from that published in the previous issue of this publication.

ROUNDING

Any discrepancies between totals and sums of components are due to rounding.

DATA REFERENCES

Data referenced in the Key Points and Commentary are available from the tables shown in this publication, or in the corresponding tables of this publication on the ABS website <<http://www.abs.gov.au>>.

.....

ABBREVIATIONS

ABS	Australian Bureau of Statistics
ADP	automatic data processing
AHECC	Australian Harmonised Export Commodity Classification
ANZSIC	Australian and New Zealand Standard Industrial Classification
BEC	Classification by Broad Economic Categories
f.o.b.	free on board
HTISC	Harmonized Tariff Item Statistical Classification
IPD	implicit price deflator
n.e.c.	not elsewhere classified
n.e.s.	not elsewhere specified
SITC	Standard International Trade Classification

Brian Pink
Australian Statistician

COMMENTARY

IMPORT PRICE INDEX

The Import Price Index recorded no change in the September quarter 2011. Rises in the prices paid for gold, non-monetary (excluding gold, ores and concentrates) (+14.3%), inorganic chemicals (+21.5%), fertilisers (excluding crude fertilisers) (+16.9%) and articles of apparel and clothing accessories (+5.2%), were offset by falls in the prices paid for petroleum, petroleum products and related materials (-3.8%) and medicinal and pharmaceutical products (-4.0%).

Through the year to the September quarter 2011, the Import Price Index fell 1.7%. This decrease was driven mainly by falls in the prices paid for telecommunications and sound-recording and reproducing apparatus and equipment (-12.9%), office machines and automatic data-processing machines (-17.6%) and road vehicles (including air-cushion vehicles) (-2.4%). Partly offsetting these through the year falls were rises in the prices paid for petroleum, petroleum products and related materials (+21.8%), gold, non-monetary (excluding gold, ores and concentrates) (+20.0%) and non-ferrous metals (+3.3%).

EXPORT PRICE INDEX

The Export Price Index rose 4.0% in the September quarter 2011. This increase was driven mainly by rises in the prices received for coal, coke and briquettes (+9.3%), gas, natural and manufactured (+24.5%), gold, non-monetary (excluding gold, ores and concentrates) (+14.8%), textile fibres and their wastes (+17.6%) and cereals and cereal preparations (+2.9%). These increases were partly offset by falls in the prices received for meat and meat preparations (-7.8%).

Through the year to the September quarter 2011, the Export Price Index rose 6.6%. This increase was driven mainly by rises in the prices received for coal, coke and briquettes (+9.4%), gold, non-monetary (excluding gold ores and concentrates) (+20.6%), petroleum, petroleum products and related materials (+27.3%), textile fibres and their wastes (+67.9%) and gas, natural and manufactured (+15.7%). Partly offsetting these through the year rises were falls in the prices received for power generating, general industrial and other specialised machinery and equipment (-6.5%), professional, scientific and controlling instruments and apparatus, n.e.s. (-15.7%), road vehicles (including air-cushion vehicles) (-7.0%) and meat and meat preparations (-3.1%).

LIST OF TABLES

page

INTERNATIONAL TRADE PRICE INDEXES

1	Import price index: All groups, index numbers and percentage changes	5
2	Import price index: SITC contribution to all groups index	6
3	Import price index: Selected SITC sections	8
4	Import price index: Consumption goods, balance of payments broad economic categories	9
5	Import price index: Capital goods, balance of payments broad economic categories	10
6	Import price index: Intermediate and other merchandise goods, balance of payments broad economic categories	11
7	Export price index: All groups, index numbers and percentage changes	13
8	Export price index: SITC contribution to all groups index	14
9	Export price index: Selected SITC sections	16
10	Export price index: Rural goods, balance of payments classification of exports	17
11	Export price index: Non-rural goods, balance of payments classification of exports	18

ADDITIONAL TABLES AVAILABLE ON ABS WEBSITE

12	Import price index, by selected SITC division	
13	Import price index, by selected HTISC section	
14	Import price index, by selected ANZSIC industry of origin division	
15	Import price index, by selected ANZSIC industry of origin subdivision	
16	Import price index, by BEC category	
17	Export price index, AHECC and ANZSIC contribution to all groups index	
18	Export price index, by selected AHECC section	
19	Export price index, by selected ANZSIC industry of origin division and subdivision	

IMPORT PRICE INDEX(a): All groups, index numbers and percentage changes

<i>Period</i>	<i>Index numbers</i>	<i>% change from previous period</i>	<i>% change from corresponding quarter of previous year</i>
2007-08	115.0	-0.6	..
2008-09	129.7	12.8	..
2009-10	117.7	-9.3	..
2010-11	116.8	-0.8	..
2006			
December	115.7	-3.2	0.0
2007			
March	113.7	-1.7	-3.0
June	113.8	0.1	-5.1
September	112.9	-0.8	-5.5
December	113.1	0.2	-2.2
2008			
March	116.2	2.7	2.2
June	117.8	1.4	3.5
September	123.7	5.0	9.6
December	137.0	10.8	21.1
2009			
March	133.2	-2.8	14.6
June	124.7	-6.4	5.9
September	120.9	-3.0	-2.3
December	115.7	-4.3	-15.5
2010			
March	116.0	0.3	-12.9
June	118.3	2.0	-5.1
September	119.1	0.7	-1.5
December	114.6	-3.8	-1.0
2011			
March	116.2	1.4	0.2
June	117.1	0.8	-1.0
September	117.1	0.0	-1.7

.. not applicable

(a) Reference base of each index: 1989-90 = 100.0.

IMPORT PRICE INDEX(a): SITC contribution to all groups index

Category	POINTS CONTRIBUTION TO ALL GROUPS		CHANGE TO POINTS CONTRIBUTION
	Jun Qtr 2011(b)	Sep Qtr 2011	Jun Qtr 2011 to Sep Qtr 2011
ALL GROUPS			
All groups	117.1	117.1	0.0
SITC SECTIONS			
0 Food and live animals	4.91	4.96	0.05
1 Beverages and tobacco	0.96	0.95	-0.01
2 Crude materials, inedible, except fuels	1.41	1.40	-0.01
3 Mineral fuels, lubricants and related materials	21.57	20.98	-0.59
4 Animal and vegetable oils, fats and waxes	0.35	0.34	-0.01
5 Chemicals and related products, n.e.s.	13.30	13.30	0.00
6 Manufactured goods classified chiefly by material	12.84	13.00	0.16
7 Machinery and transport equipment	45.04	44.88	-0.16
8 Miscellaneous manufactured articles	13.90	14.10	0.20
9 Commodities and transactions not classified elsewhere in the sitc	2.81	3.21	0.40

(a) Reference base of each index 1989-90 = 100.0.

(b) Differs from previously published June quarter 2011 due to annual reweighting.

Category	POINTS CONTRIBUTION TO ALL GROUPS		CHANGE TO POINTS CONTRIBUTION
	Jun Qtr 2011(b)	Sep Qtr 2011	Jun Qtr 2011 to Sep Qtr 2011
.....			
SELECTED SITC DIVISIONS			
02 Dairy products and birds' eggs	0.37	0.38	0.01
03 Fish, crustaceans, molluscs and aquatic invertebrates and preparations thereof	0.73	0.74	0.01
05 Vegetables and fruit	0.91	0.91	0.00
07 Coffee, tea cocoa	0.77	0.72	-0.05
09 Miscellaneous edible products and preparations	0.88	0.94	0.06
11 Beverages	0.81	0.80	-0.01
12 Tobacco	0.15	0.15	0.00
23 Crude rubber	0.09	0.09	0.00
24 Cork and wood	0.36	0.37	0.01
25 Pulp and waste paper	0.09	0.09	0.00
26 Textile fibres and their wastes	0.06	0.07	0.01
27 Crude fertilisers, other than those of division 56, and crude minerals (excluding coal, petroleum)	0.15	0.15	0.00
33 Petroleum, petroleum products and related materials	20.24	19.47	-0.77
42 Fixed vegetable fats and oils	0.29	0.28	-0.01
51 Organic chemicals	1.79	1.80	0.01
52 Inorganic chemicals	0.80	0.97	0.17
53 Dyeing, tanning and colouring materials	0.35	0.34	-0.01
54 Medicinal and pharmaceutical products	5.61	5.38	-0.23
55 Essential oils and resinoids and perfume materials	1.01	0.99	-0.02
56 Fertilisers (other than those of group 272)	0.85	1.00	0.15
57 Plastics in primary forms	0.88	0.79	-0.09
58 Plastics in non-primary forms	0.75	0.77	0.02
59 Chemical materials and products, n.e.s.	1.28	1.25	-0.03
61 Leather, leather manufactures, n.e.s., and dressed furskins	0.05	0.06	0.01
62 Rubber manufactures, n.e.s.	1.74	1.76	0.02
63 Cork and wood manufactures (excluding furniture)	0.38	0.38	0.00
64 Paper, paperboard and articles of paper pulp, of paper or of paperboard	1.47	1.50	0.03
65 Textile yarn, fabrics, made-up articles, n.e.s., and related products	1.40	1.53	0.13
66 Non-metallic mineral manufactures	1.33	1.31	-0.02
67 Iron and steel	2.26	2.24	-0.02
68 Non-ferrous metals	1.37	1.37	0.00
69 Manufactures of metals, n.e.s.	2.85	2.87	0.02
71 Power generating machinery and equipment	2.30	2.24	-0.06
72 Machinery specialised for particular industries	3.77	3.90	0.13
74 General industrial machinery and equipment, n.e.s., and machine parts, n.e.s.	5.35	5.43	0.08
75 Office machines and automatic data-processing machines	4.76	4.70	-0.06
76 Telecommunications and sound-recording equipment and reproducing apparatus and equipment	6.04	5.95	-0.09
77 Electrical machinery, etc. and parts thereof	6.31	6.25	-0.06
78 Road vehicles (incl. air-cushion vehicles)	13.58	13.49	-0.09
79 Other transport equipment	2.58	2.58	0.00
81 Prefabricated buildings and fixtures, n.e.s.	0.49	0.50	0.01
82 Furniture and parts thereof	1.41	1.43	0.02
83 Travel goods, handbags and similar containers	0.41	0.40	-0.01
84 Articles of apparel and clothing accessories	3.00	3.15	0.15
85 Footwear	0.71	0.73	0.02
87 Professional, scientific and controlling instruments and apparatus, n.e.s.	2.55	2.55	0.00
88 Photographic and optical goods	0.74	0.75	0.01
89 Miscellaneous manufactured articles, n.e.s.	4.58	4.57	-0.01
97 Gold, non-monetary (excluding gold, ores and concentrates)	2.81	3.21	0.40

(a) Reference base of each index 1989-90 = 100.0.

(b) Differs from previously published June quarter 2011 due to annual reweighting.

IMPORT PRICE INDEX(a): SITC sections

<i>Period</i>	<i>Food and live animals (0)</i>	<i>Beverages and tobacco (1)</i>	<i>Crude materials, inedible, except fuels (2)</i>	<i>Mineral fuels, lubricants and related materials (3)</i>	<i>Animal and vegetable oils, fats and waxes (4)</i>	<i>Chemicals and related products, n.e.s. (5)</i>	<i>Manufactured goods classified chiefly by material (6)</i>	<i>Machinery and transport equipment (7)</i>	<i>Miscellaneous manufactured articles (8)</i>	<i>Commodities and transactions, n.e.s. (9)</i>
2007-08	126.2	122.8	138.8	353.7	197.8	120.7	130.0	85.2	101.1	185.1
2008-09	147.1	131.6	174.1	332.7	245.0	142.4	151.8	95.4	122.5	241.0
2009-10	134.2	132.9	130.3	297.2	178.5	124.7	136.4	87.2	107.6	253.3
2010-11	131.0	128.6	140.7	335.7	184.4	123.3	136.5	82.1	101.3	286.3
2006										
December	124.5	124.8	127.2	266.5	165.7	118.0	136.5	93.2	110.9	161.2
2007										
March	124.7	123.9	123.2	250.8	164.8	117.2	134.9	92.0	109.2	167.0
June	120.6	120.0	124.5	282.9	162.9	121.4	132.7	89.8	105.7	161.9
September	124.6	121.8	131.4	290.6	176.1	120.6	132.0	87.5	104.0	162.2
December	122.0	122.5	131.3	330.9	178.0	119.1	129.0	85.3	100.6	178.6
2008										
March	128.8	123.7	139.9	367.4	209.6	120.4	129.4	85.1	101.3	207.0
June	129.3	123.3	152.6	425.9	227.6	122.8	129.5	82.7	98.6	192.4
September	131.9	126.8	171.3	477.3	228.3	134.7	135.8	83.6	102.0	198.3
December	158.4	128.4	223.0	356.8	260.0	157.5	160.1	98.8	129.7	240.5
2009										
March	151.5	136.6	175.6	241.0	264.8	143.5	163.3	102.6	136.3	278.2
June	146.7	134.5	126.4	255.7	226.9	134.0	147.8	96.6	121.9	247.0
September	137.4	134.4	123.7	294.3	195.4	128.8	141.4	91.0	113.5	234.8
December	128.8	133.7	123.8	292.9	184.5	124.0	132.7	86.0	105.3	247.3
2010										
March	133.7	132.9	129.9	291.4	174.0	121.3	134.5	86.4	105.1	252.2
June	136.7	130.7	143.8	310.3	160.2	124.5	137.0	85.5	106.6	278.9
September	135.1	130.8	139.4	307.9	168.1	126.3	141.6	85.9	107.6	280.2
December	127.6	128.1	139.1	304.8	179.5	121.7	135.2	82.3	100.4	286.0
2011										
March	130.0	128.4	142.7	345.7	186.7	121.7	135.2	81.0	99.9	284.8
June	131.2	127.1	141.6	384.5	203.4	123.4	134.1	79.1	97.1	294.2
September	132.6	124.6	140.3	374.0	197.7	123.3	135.8	78.8	98.5	336.3

(a) Reference base of each index: 1989-90 = 100.0.

IMPORT PRICE INDEX(a): Consumption goods

BALANCE OF PAYMENTS BROAD ECONOMIC CATEGORIES

	Consumption goods total	<i>Food and beverages, mainly for consumption</i>	<i>Household electrical items</i>	<i>Non-industrial transport equipment</i>	<i>Textiles, clothing and footwear</i>	<i>Toys, books and leisure goods</i>	<i>Consumption goods, n.e.s.</i>
2007-08	112.6	131.5	65.9	143.8	96.1	103.8	110.0
2008-09	126.9	150.4	72.1	151.1	119.8	124.0	122.4
2009-10	118.0	138.9	63.8	149.8	104.2	108.2	115.2
2010-11	113.5	134.3	55.2	144.7	102.8	102.0	112.6
2006							
December	116.9	131.1	75.5	145.4	104.3	115.2	113.2
2007							
March	116.3	130.9	75.1	146.0	101.6	114.6	112.6
June	114.5	126.7	72.7	145.4	98.5	110.0	113.0
September	113.4	130.2	69.9	142.7	98.5	107.7	112.5
December	112.0	127.8	66.7	142.5	96.4	103.8	110.4
2008							
March	113.1	134.0	64.9	145.6	96.6	104.4	109.0
June	111.8	133.9	62.2	144.4	93.0	99.4	108.2
September	114.1	136.5	65.6	143.9	97.8	103.5	110.2
December	131.4	159.4	74.6	150.1	126.5	132.6	127.5
2009							
March	134.8	155.6	76.3	155.9	134.4	137.4	130.1
June	127.3	150.0	71.8	154.4	120.3	122.6	121.7
September	121.3	142.2	67.5	152.3	110.5	112.7	116.7
December	115.6	134.7	62.8	149.4	100.9	104.6	112.7
2010							
March	117.1	138.2	62.9	150.0	100.8	107.7	114.8
June	117.8	140.4	61.8	147.4	104.4	107.7	116.4
September	117.7	138.3	59.6	145.8	108.1	108.9	117.1
December	112.9	131.7	54.9	145.1	101.2	101.9	112.3
2011							
March	112.3	133.4	54.3	143.8	102.4	99.9	110.9
June	111.1	133.7	52.1	143.9	99.5	97.3	110.1
September	111.1	134.8	52.1	142.7	105.4	97.1	107.6

(a) Reference base of each index: 1989-90 = 100.0.

IMPORT PRICE INDEX(a): Capital goods

BALANCE OF PAYMENTS BROAD ECONOMIC CATEGORIES

<i>Period</i>	Capital goods total	<i>Machinery and industrial equipment</i>	<i>ADP equipment</i>	<i>Telecommunications equipment</i>	<i>Civil aircraft</i>	<i>Industrial transport equipment, n.e.s.</i>	<i>Capital goods, n.e.s.</i>
2007-08	83.0	123.8	13.3	30.1	132.2	152.4	108.4
2008-09	95.5	148.6	14.3	32.5	168.4	166.8	122.4
2009-10	85.3	135.5	11.8	27.7	143.4	161.0	112.8
2010-11	79.8	129.2	10.3	25.4	132.5	159.2	102.9
2006							
December	91.1	130.2	17.4	36.0	148.3	156.5	117.8
2007							
March	89.5	128.7	16.6	35.0	146.2	154.8	114.3
June	87.4	127.9	15.4	33.5	140.4	154.2	111.7
September	85.3	125.4	14.6	31.5	137.0	153.6	111.4
December	83.3	124.8	13.4	29.9	131.8	154.2	107.8
2008							
March	82.7	123.1	13.0	30.2	132.4	153.3	107.7
June	80.6	121.8	12.0	28.7	127.6	148.5	106.8
September	81.2	124.6	12.0	28.6	132.1	150.5	101.9
December	100.0	154.5	15.4	35.0	177.5	168.4	128.3
2009							
March	104.1	162.8	15.6	34.8	190.6	177.9	134.9
June	96.5	152.5	14.0	31.7	173.4	170.3	124.5
September	89.8	140.5	12.7	29.3	152.2	168.5	120.8
December	83.9	133.4	11.5	27.3	138.0	158.4	111.8
2010							
March	84.2	135.0	11.5	27.2	140.6	162.1	107.8
June	83.4	133.0	11.4	26.9	142.6	154.9	110.6
September	84.3	135.7	11.4	27.1	143.8	160.1	108.8
December	80.2	129.6	10.3	25.6	132.3	161.3	103.2
2011							
March	78.6	127.4	10.0	25.0	129.7	158.8	101.7
June	76.0	124.2	9.4	24.0	124.0	156.6	98.0
September	75.8	125.3	9.3	23.5	124.5	155.6	98.3

(a) Reference base of each index: 1989-90 = 100.0.

IMPORT PRICE INDEX(a): Intermediate and other merchandise goods

BALANCE OF PAYMENTS BROAD ECONOMIC CATEGORIES

<i>Period</i>	Intermediate and other merchandise goods total	<i>Intermediate and other goods total excluding non- monetary gold</i>	<i>Food and beverages, mainly for industry</i>	<i>Primary industrial supplies, n.e.s.</i>	<i>Fuels and lubricants</i>	<i>Parts for transport equipment</i>	<i>Parts for ADP equipment</i>	<i>Other parts for capital goods</i>	<i>Organic and inorganic chemicals</i>
2007-08	136.2	135.6	162.1	143.1	420.2	123.7	10.6	80.1	122.8
2008-09	152.2	149.8	207.5	190.2	388.9	143.1	11.5	92.0	161.4
2009-10	136.9	132.5	177.1	133.7	349.7	134.3	9.1	85.2	129.9
2010-11	142.0	135.9	191.6	139.8	392.8	132.7	7.9	80.0	120.2
2006									
December	128.1	128.0	128.6	129.8	315.1	133.0	13.9	87.3	112.6
2007									
March	124.9	124.8	133.4	121.7	296.3	132.8	13.2	86.4	112.1
June	128.2	128.2	133.7	120.9	335.3	129.1	12.2	84.2	120.3
September	128.5	128.1	145.1	130.4	344.7	126.0	11.6	82.6	120.6
December	131.7	131.2	148.4	133.4	393.7	122.1	10.7	80.1	119.3
2008									
March	138.9	137.5	169.8	144.1	435.6	124.8	10.4	79.6	124.9
June	145.6	145.6	185.2	164.3	506.8	121.7	9.5	77.9	126.3
September	157.7	158.3	191.6	188.9	563.4	124.8	9.6	79.3	153.5
December	163.4	161.9	229.0	250.3	413.5	148.2	12.5	95.7	173.0
2009									
March	148.6	143.7	210.0	188.0	279.8	154.6	12.8	99.4	169.3
June	139.1	135.3	199.2	133.5	299.0	144.8	11.2	93.4	149.8
September	138.8	135.9	181.2	131.8	345.8	137.3	9.9	89.1	146.3
December	134.6	130.4	174.1	127.8	345.2	130.8	8.8	84.3	138.4
2010									
March	134.3	129.7	177.6	131.5	342.8	132.9	8.8	83.6	118.5
June	139.7	133.9	175.5	143.5	364.8	136.2	8.8	83.6	116.3
September	141.1	135.3	185.7	135.1	359.4	136.9	8.8	84.0	123.4
December	136.8	130.5	184.4	137.5	357.1	132.4	8.0	79.9	117.5
2011									
March	142.4	136.4	191.0	143.1	405.0	131.8	7.7	79.3	117.6
June	147.5	141.4	205.3	143.4	449.8	129.6	7.2	76.8	122.4
September	147.8	140.6	199.9	138.3	438.6	129.8	7.1	77.4	131.1

(a) Reference base of each index: 1989-90 = 100.0.

BALANCE OF PAYMENTS BROAD ECONOMIC CATEGORIES *continued*

<i>Period</i>	<i>Paper and paperboard</i>	<i>Textile yarn and fabric</i>	<i>Iron and steel</i>	<i>Plastics</i>	<i>Processed industrial supplies, n.e.s.</i>	<i>Non- monetary gold</i>
2007-08	91.4	102.1	159.6	125.2	136.6	185.2
2008-09	98.2	122.5	201.8	161.8	163.3	241.3
2009-10	88.3	104.6	166.3	145.9	139.0	253.6
2010-11	82.7	109.0	175.2	138.6	139.5	286.6
2006						
December	95.5	107.4	158.1	134.6	143.7	161.4
2007						
March	96.5	105.0	164.3	130.2	140.5	167.2
June	94.1	105.2	159.6	129.9	139.6	162.0
September	92.6	102.8	165.6	128.1	136.2	162.3
December	92.7	101.3	158.5	123.3	132.8	178.8
2008						
March	90.3	102.4	155.5	124.3	137.6	207.2
June	89.9	101.8	158.7	124.9	139.9	192.6
September	93.3	106.7	178.0	135.9	150.9	198.5
December	97.4	132.3	227.6	180.5	182.1	240.7
2009						
March	102.6	131.9	226.5	173.2	166.5	278.5
June	99.3	119.2	174.9	157.7	153.5	247.3
September	92.6	106.9	175.4	147.3	143.9	235.1
December	88.1	100.4	158.6	141.8	135.7	247.5
2010						
March	87.4	103.1	164.0	142.4	136.4	252.5
June	85.1	108.0	167.1	152.1	139.8	279.1
September	85.7	113.7	183.5	151.2	143.8	280.5
December	84.4	105.6	169.1	133.0	137.3	286.3
2011						
March	81.4	106.7	171.9	133.6	138.4	285.1
June	79.4	110.1	176.2	136.4	138.3	294.5
September	81.1	115.6	174.6	131.0	139.0	336.6

(a) Reference base of each index: 1989-90 = 100.0.

EXPORT PRICE INDEX (a): All groups, index numbers and percentage changes

<i>Period</i>	<i>Index numbers</i>	<i>% change from previous period</i>	<i>% change from corresponding quarter of previous year</i>
2007-08	149.6	1.9	..
2008-09	196.5	31.4	..
2009-10	157.6	-19.8	..
2010-11	188.0	19.3	..
2006			
December	146.7	0.2	11.1
2007			
March	146.7	0.0	5.8
June	147.2	0.3	2.4
September	142.8	-3.0	-2.5
December	142.0	-0.6	-3.2
2008			
March	146.9	3.5	0.1
June	166.8	13.5	13.3
September	189.8	13.8	32.9
December	219.9	15.9	54.9
2009			
March	209.8	-4.6	42.8
June	166.5	-20.6	-0.2
September	150.5	-9.6	-20.7
December	148.0	-1.7	-32.7
2010			
March	153.6	3.8	-26.8
June	178.3	16.1	7.1
September	192.2	7.8	27.7
December	176.7	-8.1	19.4
2011			
March	185.9	5.2	21.0
June	197.1	6.0	10.5
September	204.9	4.0	6.6

.. not applicable

(a) Reference base of each index: 1989-90 = 100.0.

EXPORT PRICE INDEX(a): SITC contribution to all groups index

Category	CONTRIBUTION TO ALL GROUPS INDEX		CHANGE IN POINTS CONTRIBUTION
	Jun Qtr 2011(b)	Sep Qtr 2011	Jun Qtr 2011 to Sep Qtr 2011
ALL GROUPS			
All groups	197.1	204.9	7.8
SITC SECTIONS			
0 Food and live animals	19.20	18.99	-0.21
1 Beverages and tobacco	1.89	1.94	0.05
2 Crude materials, inedible, except fuels	70.80	71.21	0.41
3 Mineral fuels, lubricants and related materials	54.68	60.16	5.48
4 Animal and vegetable oils, fats and waxes	0.41	0.40	-0.01
5 Chemicals and related products, n.e.s.	6.93	7.02	0.09
6 Manufactured goods classified chiefly by material	15.43	15.33	-0.10
7 Machinery and transport equipment	10.00	10.14	0.14
8 Miscellaneous manufactured articles	3.97	3.97	0.00
9 Commodities and transactions not classified elsewhere in the sitc	13.83	15.73	1.90

(a) Reference base of each index 1989-90 = 100.0.

(b) Differs from previously published June quarter 2011 due to annual reweighting.

Category	CONTRIBUTION TO ALL GROUPS INDEX		CHANGE IN POINTS CONTRIBUTION	
	Jun Qtr 2011(b)	Sep Qtr 2011	Jun Qtr 2011 to Sep Qtr 2011	
			
.....				
SELECTED SITC DIVISIONS				
00	Live animals other than animals of division 03	0.98	0.94	-0.04
01	Meat and meat preparations	5.66	5.22	-0.44
02	Dairy products and birds' eggs	1.85	1.95	0.10
03	Fish, crustaceans, molluscs and aquatic invertebrates and preparations thereof	0.80	0.89	0.09
04	Cereals and cereal preparations	5.28	5.43	0.15
05	Vegetables and fruit	1.25	1.27	0.02
06	Sugars, sugar preparations and honey	1.64	1.54	-0.10
07	Coffee, tea, cocoa, spices and manufactures thereof	0.24	0.24	0.00
08	Feeding stuff for animals (not including unmilled cereals)	0.81	0.83	0.02
09	Miscellaneous edible products and preparations	0.68	0.68	0.00
11	Beverages	1.78	1.84	0.06
21	Hides, skins and furskins, raw	0.69	0.65	-0.04
22	Oil seeds and oleaginous fruits	0.68	0.71	0.03
24	Cork and wood	0.95	0.96	0.01
26	Textile fibres and their wastes	3.21	3.78	0.57
27	Crude fertilisers, other than those of division 56, and crude minerals (excluding coal, petroleum)	0.70	0.74	0.04
28	Metalliferous ores and metal scrap	64.15	63.93	-0.22
32	Coal, coke and briquettes	35.80	39.15	3.35
33	Petroleum, petroleum products and related materials	10.09	10.06	-0.03
34	Gas, natural and manufactured	8.79	10.95	2.16
41	Animal oils and fats	0.27	0.26	-0.01
51	Organic chemicals	0.15	0.15	0.00
52	Inorganic chemicals	0.56	0.57	0.01
53	Dyeing, tanning and colouring materials	0.58	0.66	0.08
54	Medicinal and pharmaceutical products	3.40	3.39	-0.01
57	Plastics in primary forms	0.34	0.35	0.01
58	Plastics in non-primary forms	0.28	0.29	0.01
59	Chemical materials and products, n.e.s.	0.76	0.78	0.02
61	Leather, leather manufactures, n.e.s., and dressed furskins	0.24	0.25	0.01
62	Rubber manufactures, n.e.s.	0.16	0.16	0.00
64	Paper, paperboard, and articles of paper pulp, of paper or of paperboard	0.66	0.66	0.00
66	Non-metallic mineral manufactures, n.e.s.	0.82	0.89	0.07
67	Iron and steel	2.03	2.03	0.00
68	Non-ferrous metals	10.38	10.15	-0.23
71-75	Power generating, general industrial and other specialised machinery and equipment	4.58	4.62	0.04
76-77	Telecommunications equipment, sound-recording apparatus and electrical machinery, n.e.s.	2.02	2.08	0.06
78	Road vehicles (incl. air-cushion vehicles)	2.23	2.26	0.03
79	Other transport equipment	1.16	1.17	0.01
81-82	Prefabricated buildings and furniture and parts thereof	0.20	0.20	0.00
87	Professional, scientific and controlling instruments and apparatus, n.e.s.	1.57	1.52	-0.05
88	Photographic apparatus, equipment and supplies and optical goods, n.e.s.	0.22	0.21	-0.01
89	Miscellaneous manufactured articles, n.e.s.	1.72	1.75	0.03
97	Gold, non-monetary (excluding gold, ores and concentrates)	11.90	13.66	1.76

(a) Reference base of each index 1989-90 = 100.0.

(b) Differs from previously published June quarter 2011 due to annual reweighting.

EXPORT PRICE INDEX(a): SITC sections

Period	Food and live animals (0)	Beverages and tobacco (1)	Crude materials, inedible, except fuels (2)	Mineral fuels, lubricants and related materials (3)	Animal and vegetable oils, fats and waxes (4)	Chemicals and related products, n.e.s. (5)	Manufactured goods classified chiefly by material (6)	Machinery and transport equipment (7)	Miscellaneous manufactured articles (8)	Commodities and transactions, n.e.s. (9)
2007-08	132.5	105.0	148.0	250.1	200.1	115.2	170.1	85.1	87.3	181.7
2008-09	162.6	101.9	178.6	492.3	156.0	128.0	142.2	96.8	96.9	238.0
2009-10	143.2	90.2	144.7	305.0	162.9	120.0	131.9	87.8	87.0	244.7
2010-11	157.6	84.8	201.2	372.0	204.1	127.0	142.9	83.0	79.9	277.3
2006										
December	117.9	119.6	144.4	233.5	137.8	126.2	185.8	89.3	95.5	161.9
2007										
March	120.6	119.6	148.0	222.3	137.9	126.1	186.1	89.1	94.8	166.3
June	117.4	117.4	155.8	214.7	165.4	120.9	197.4	87.5	92.5	162.5
September	117.3	111.9	146.3	216.4	184.8	119.1	179.2	87.3	89.8	161.7
December	121.4	102.0	138.7	230.4	204.2	113.3	167.0	85.1	87.7	174.9
2008										
March	140.0	104.5	139.0	235.6	220.8	111.3	165.2	85.1	87.1	198.9
June	151.3	101.5	168.0	318.1	190.5	117.2	169.0	83.0	84.6	191.4
September	160.4	97.3	179.5	453.0	184.4	122.0	166.3	87.1	90.1	199.1
December	181.0	103.9	205.0	569.3	108.1	134.1	161.3	102.1	102.2	240.1
2009										
March	162.5	105.8	185.1	571.7	136.0	131.4	124.4	102.8	101.3	272.8
June	146.5	100.4	144.9	375.1	195.5	124.5	116.6	95.3	93.8	239.8
September	143.6	91.8	129.8	293.3	164.6	119.5	126.7	90.0	91.4	227.0
December	136.1	89.6	127.9	287.9	168.7	117.8	125.0	86.4	86.4	239.7
2010										
March	144.7	89.6	135.5	295.0	148.8	120.1	134.0	86.8	83.7	242.5
June	148.5	89.7	185.4	343.9	169.3	122.5	141.8	87.8	86.5	269.7
September	150.1	87.6	209.8	389.9	180.0	126.1	140.5	86.9	82.9	272.4
December	153.6	85.8	183.1	338.2	209.8	124.6	140.1	82.5	79.6	275.3
2011										
March	161.0	86.1	197.5	359.7	224.6	128.4	146.1	82.6	79.4	275.6
June	165.5	79.5	214.5	400.2	201.9	128.7	144.7	80.1	77.6	285.8
September	163.7	81.9	215.7	440.2	198.6	130.4	143.8	81.3	77.7	325.1

(a) Reference base of each index: 1989-90 = 100.0.

BALANCE OF PAYMENTS CLASSIFICATION OF EXPORTS

<i>Period</i>	Rural goods total	<i>Meat and meat preparations</i>	<i>Cereal grains and cereal preparations</i>	<i>Wool and sheepskins</i>	<i>Other rural</i>
2007-08	118.2	140.3	142.6	81.9	137.3
2008-09	135.6	178.5	182.3	69.8	149.8
2009-10	120.5	161.5	133.1	74.6	138.4
2010-11	134.8	179.2	144.6	96.7	151.9
2006					
December	101.0	137.9	96.9	66.0	123.4
2007					
March	106.2	138.7	108.7	76.3	125.8
June	105.9	129.1	108.7	80.4	128.3
September	106.7	127.8	112.4	80.6	128.9
December	110.1	126.0	125.3	81.2	132.2
2008					
March	124.4	142.0	159.0	85.7	143.2
June	131.5	165.4	173.7	80.1	144.8
September	137.4	186.2	175.9	76.7	149.4
December	149.1	199.7	206.7	72.3	162.8
2009					
March	133.5	171.2	184.5	65.4	149.7
June	122.2	156.7	162.0	64.6	137.4
September	120.2	162.5	143.9	66.7	136.2
December	115.4	151.8	131.8	71.2	132.3
2010					
March	121.2	161.5	128.4	81.2	139.4
June	125.1	170.3	128.4	79.4	145.8
September	128.0	176.9	130.2	79.4	149.1
December	130.0	170.3	141.9	84.7	149.4
2011					
March	137.6	183.5	150.3	104.1	151.4
June	143.5	186.0	155.8	118.5	157.5
September	146.4	171.2	160.3	121.7	168.1

(a) Reference base of each index: 1989-90 = 100.0.

BALANCE OF PAYMENTS CLASSIFICATION OF EXPORTS

<i>Period</i>	<i>Non-rural goods total (excl. non-monetary gold)</i>	<i>Metal ores and minerals</i>	<i>Coal, coke and briquettes</i>	<i>Other mineral fuels</i>	<i>Metals (excl. non-monetary gold)</i>	<i>Machinery</i>	<i>Transport equipment</i>	<i>Other manufactures</i>	<i>Other non-rural</i>	<i>Non-monetary gold</i>
2007-08	162.9	188.7	166.5	466.0	189.4	77.7	102.6	105.2	74.9	187.8
2008-09	219.2	231.9	441.3	522.2	151.6	87.7	118.0	112.5	89.2	244.4
2009-10	168.1	182.3	223.0	431.6	140.6	80.2	105.3	103.8	84.6	257.4
2010-11	204.1	259.2	277.7	509.1	153.2	76.0	98.5	106.2	89.1	290.3
2006										
December	166.2	194.8	178.5	364.2	210.2	80.1	110.3	109.1	86.6	163.7
2007										
March	163.9	196.3	171.0	343.7	210.2	80.1	109.6	108.6	84.4	169.6
June	165.2	203.1	160.1	348.2	225.0	79.3	106.5	107.6	81.1	164.4
September	158.5	189.9	155.6	368.0	201.3	79.3	106.0	106.2	75.6	164.6
December	155.0	175.8	146.1	451.2	185.6	77.3	103.4	105.8	71.6	181.3
2008										
March	155.2	173.6	143.3	479.8	182.5	77.7	102.3	105.0	74.2	210.0
June	182.7	215.6	220.9	565.0	188.2	76.3	98.8	103.8	78.2	195.3
September	212.6	232.2	374.9	590.9	184.2	80.8	102.0	108.0	80.7	200.9
December	248.3	268.9	511.7	598.9	172.8	91.9	125.5	119.8	93.6	243.7
2009										
March	235.4	242.1	538.4	514.6	127.3	92.2	127.1	115.3	95.6	282.3
June	180.5	184.5	340.2	384.2	121.9	85.7	117.3	106.7	86.7	250.6
September	159.8	162.6	223.9	393.8	135.4	81.8	109.2	103.7	80.7	238.1
December	156.4	159.1	208.2	412.2	133.1	79.1	103.3	101.5	80.8	253.0
2010										
March	162.6	168.1	204.9	441.3	142.8	79.7	103.2	103.1	88.5	255.4
June	193.7	239.5	254.9	479.0	150.9	80.2	105.3	106.8	88.4	283.0
September	212.0	273.9	299.2	498.7	149.4	79.4	103.3	107.2	85.6	283.9
December	189.9	235.8	251.4	467.3	150.7	75.7	97.5	104.4	86.4	289.8
2011										
March	200.6	253.2	260.7	526.0	157.7	75.4	98.2	106.7	91.9	288.7
June	213.9	273.9	299.5	544.5	155.0	73.4	95.0	106.6	92.6	298.6
September	221.1	272.4	327.4	605.9	152.2	74.4	96.0	108.9	92.8	343.0

(a) Reference base of each index: 1989-90 = 100.0.

EXPLANATORY NOTES

INTRODUCTION

1 This publication contains indexes measuring changes in the prices paid for imports of merchandise that are landed in Australia each quarter and prices received for exports of merchandise that are shipped from Australia each quarter. The import price indexes are in tables 1–6 and the export price indexes are in tables 7–11.

2 The indexes are calculated on the reference base 1989–90=100.0.

SCOPE

3 The import price index excludes the following items (representing less than 5% of the value of merchandise imported during the weighting period) because of the inherent difficulties in pricing the items to constant quality (see paragraph 15 below)

- live animals (not for food)
- jewellery and other articles of precious metal, n.e.s.
- military equipment
- commodities not classified according to kind
- works of art, collectors' pieces, antiques
- railway vehicles
- ships of various types.

4 The export price index includes re-exports of merchandise (i.e. goods which are imported into Australia and exported at a later date without physical transformation).

CLASSIFICATIONS

5 Index numbers for selected sections of the Standard International Trade Classification (SITC) are provided in table 3 (import price index) and table 9 (export price index). The SITC (Revision 4) used from the September quarter 2008 onwards is the United Nations' updated version, replacing SITC (Revision 3). SITC (Revision 4) retains the overall structure of SITC (Revision 3) and consists of the same number of sections, divisions and groups. Changes to the classification labels and components were made at levels lower than those used in the Import and Export Prices Indexes. As a result, there has been no material impact on the indexes, which remain comparable across the changes in classification.

6 The import price index is also presented by Balance of Payments Broad Economic Categories in tables 4–6, which have been disaggregated into balance of payments groupings of consumption goods, capital goods and intermediate and other merchandise goods. From the September quarter 2008 onwards, the previous heading of Classification of Broad Economic Categories (BEC) End Use, has been replaced with Balance of Payments Broad Economic Categories. This is simply a name change, with the series remaining comparable to previously published series.

7 The export price index is also presented by balance of payments classification of exports groupings in tables 10 and 11.

ITEMS AND WEIGHTS

8 The import price index and export price index are annually reweighted chained Laspeyres indexes. This method of weighting was introduced for the September quarter 2000 and replaces the 'fixed-base' method of weighting in which the weighting patterns are updated infrequently (generally once every 5 or 10 years).

9 The annual reweighting and chaining process involves a number of steps in order to provide new weights each year. The current weighting basis for the import price index was derived from the average value of import items during 2010–11. This differs slightly from the export price index which has used the average value of export items during 2009–10 and 2010–11, due to the greater volatility associated with the value of export items. These weights were revalued to reflect link period (June quarter 2011) price levels. This means, for example, that the weights for the import price index are effectively determined using quantities from 2010–11 and prices from the June quarter 2011. Indexes derived by using the new weights for the September quarter 2011 were then linked to the already published June quarter 2011 (link period) levels which were derived using the previous series weights. Using this methodology, long-term chain

EXPLANATORY NOTES *continued*

ITEMS AND WEIGHTS *continued*

linked series can be constructed over time on a consistent reference base for continuity and user convenience, but using annually refreshed weights. The reference base for each index series continues to be 1989–90=100 even though the weights are being updated each year.

10 The commodities directly represented in each index (the index items) were selected on the basis of the significance of their import and export values in the period 2010–11 for imports and 2009–10 and 2010–11 for exports. All significant commodities were selected for pricing. The weights for minor commodities which are not directly priced are included with those of comparable directly priced items where prices are likely to move in a similar way.

PRICE MEASUREMENT

11 In general, prices of individual shipments are obtained from major importers and exporters of the selected items and relate to the quarter in which the imported goods physically arrive in Australia and the exported goods physically leave Australia.

12 Imports are priced on a 'free on board' (f.o.b.), country of origin basis. Therefore freight and insurance charges involved in shipping goods from foreign to Australian ports are excluded from the prices used in the index, as are Australian import duties and taxes. Similarly, exports are priced on a f.o.b. basis at the main Australian ports of export. Exports are exempt from taxes on products.

13 As the prices used in the indexes are expressed in Australian currency, changes in the relative value of the Australian dollar and overseas currencies can have a direct impact on price movements for the many commodities that are bought and sold in currencies other than Australian dollars. Prices reported in a foreign currency are converted to Australian dollars using relevant exchange rates. Where imports or exports are transacted in prices expressed in terms of a foreign currency and forward exchange cover is used, the prices in the indexes exclude the forward exchange cover. As noted, imports are priced on a country of origin basis. Therefore the exchange rates applied are impacted by the differences between the date of transaction (ownership change) and the shipping time from the country of origin to Australia.

14 The main pricing methodology used is specification pricing, under which a manageable sample of precisely specified products is selected, in consultation with each reporting business, for repeat pricing. In specifying the products, care is taken to ensure that they are fully defined in terms of all the characteristics which influence their transaction prices. As such, all the relevant technical characteristics need to be described (e.g. make, model, features) along with the unit of sale, type of packaging, conditions of sale (e.g. delivered, payment within 30 days), etc. The goods are also specified by country and market in order to lessen the impact of price variations attributable solely to changes over time in the mix of countries, or markets.

15 When the quality or specifications of an item being priced change over time, adjustments are made to the reported prices so that the index captures only pure price change. That is, any element of price change attributable to a change in quality is removed. If there is an increase (decrease) in the quality of an item, then the price index is adjusted downwards (upwards) to reflect the 'worth' of the quality change. This technique is known as pricing to constant quality.

16 Wherever possible, prices from volume selling products being traded with predominant countries, or markets, are obtained to ensure specifications have a good chance of being re-priced over time and index series are representative of overall price movements. Individual product weights and weights between markets and countries are regularly reviewed to keep the indexes up to date. The ABS has access to a rich source of international merchandise trade data and selectively uses average unit values in the export price index to augment specification pricing. Imported commodities are typically

EXPLANATORY NOTES *continued*

- PRICE MEASUREMENT *continued* more stable in price, but non-homogenous in character and generally do not lend themselves to measurement by average unit value.
- DIFFERENCES BETWEEN EPI AND EXPORT IPD **17** There are differences between the export price index (EPI) presented in this publication, and the export implicit price deflator (IPD) presented in *National Income, Expenditure and Product* (cat. no. 5206.0) and *Balance of Payments and International Investment Position* (cat. no. 5302.0). The differences are mainly due to the index methodology (fixed basket price index for the EPI, whereas the IPD is a quarterly weighted index, which includes price change and compositional change from period to period), the completeness of the dataset used and the source of the data. Complete data for the third month of the quarter are not available for some components of the EPI due to the timing of its release. Further, the EPI is calculated from predominantly sampled businesses, whereas the export IPD is calculated from predominantly international merchandise trade data supplied by Customs. These differences can result in significant divergences between the measures when prices of commodities, which form a large proportion of exports, are volatile.
- INDEX NUMBERS **18** Index numbers for financial years are simple averages of the relevant quarterly index numbers.
- ANALYSIS OF INDEX CHANGES **19** Care should be exercised when interpreting quarter-to-quarter movements in the indexes as short-term movements do not necessarily indicate changes in trend.
- 20** Movements in indexes from one period to another can be expressed either as changes in 'index points' or as percentage changes. The following example illustrates the method of calculating index points changes and percentage changes between any two periods:
- | | |
|--|----------------------------------|
| Export price index, All groups index number: | |
| December quarter 2010 | 176.7 (see table 7) |
| less December quarter 2009 | 148.0 (see table 7) |
| Change in index points | 28.7 |
| Percentage change | $28.7/148.0 \times 100 = 19.4\%$ |
- 21** Tables 2 and 8 provide analyses of the contribution which SITC sections and divisions make to the All groups import price index and export price index, respectively. For example, exports of mineral fuels, lubricants and related materials contributed 60.16 index points to the All groups export price index number of 204.9 for the September quarter 2011 and 5.48 index points to the net change of 7.8 index points between the June 2011 and September 2011 quarters.
- FURTHER INFORMATION **22** For further information on price indexes in the ABS refer to the following publications:
- Information Paper: Producer and International Trade Price Indexes; Concepts, Sources and Methods 2006*, (cat. no. 6429.0)
 - Information Paper: Review of the Producer and International Trade Price Indexes, 2011* (cat. no. 6427.0.55.003)
 - Information Paper: An Analytical Framework for Price Indexes in Australia*, (cat. no. 6421.0)
 - Information Paper: Producer Price Index Developments*, (cat. no. 6422.0)
 - Information Paper: Review of the Import Price Index and Export Price Index, Australia*, (cat. no. 6424.0)
 - Information Paper: Price Indexes and The New Tax System*, (cat. no. 6425.0)
 - Information Paper: Changes to the Weights of the Price Indexes for the Output of the General Construction Industry, Australia*, (cat. no. 6406.0)
 - Information Paper: Update on ANZSIC 2006 Implementation for Producer and International Trade Price Indexes, Australia, 2009*, (cat. no. 6427.0.55.002)

EXPLANATORY NOTES *continued*

RELATED PUBLICATIONS

23 Users may also wish to refer to the following related publications, which are available from the ABS website:

Producer Price Indexes, Australia, (cat. no. 6427.0)

Consumer Price Index, Australia, (cat. no. 6401.0)

Labour Price Index, Australia, (cat. no. 6345.0)

Australian National Accounts, Input–Output Tables, (cat. no. 5209.0)

Balance of Payments and International Investment Position, Australia,
(cat. no. 5302.0)

24 Current publications and other products released by the ABS are listed on the ABS website <<http://www.abs.gov.au>>. The ABS also issues a daily *Release Advice* on the website which details products to be released in the week ahead.

APPENDIX INDEX STRUCTURES AND WEIGHTING PATTERNS

COMPOSITION

Both the Import Price Index and the Export Price Index data have been reweighted for the September quarter 2011. It is ABS practice to reweight these indexes annually each September quarter, as explained in paragraphs 8–10 of the Explanatory Notes. The new weighting patterns for both the Import Price Index and Export Price Index, based on the Standard International Trade Classification (SITC) (Revision 4), are presented in this Appendix.

All SITC sections and divisions are included in the reweighted index structure for completeness. However, indexes for some of the lower weighted SITC divisions are not constructed separately and so are not available for publication.

Corresponding new weighting patterns based on classification by Broad Economic Categories (BEC), Harmonized Tariff Item Statistical Classification (HTSIC) and Australian and New Zealand Standard Industrial Classification (ANZSIC) for the Import Price Index and Australian Harmonised Export Commodity Classification (AHECC) and ANZSIC for the Export Price Index can be made available on request.

APPENDIX INDEX STRUCTURES AND WEIGHTING PATTERNS *continued*

IMPORT PRICE INDEX GROUPED BY SITC (REVISION 4)(a)(b)(c)

SITC	PERCENTAGE CONTRIBUTIONS	
	Divisions to Sections 2011	Divisions and Sections to All Groups 2011
0 Food and live animals	100.00	4.18
01 Meat and meat preparations	6.29	0.26
02 Dairy products and birds' eggs	7.51	0.31
03 Fish (not marine mammals), crustaceans, molluscs and aquatic invertebrates, and preparations thereof	14.79	0.62
04 Cereals and cereal preparations	8.84	0.37
05 Vegetables and fruit	18.49	0.77
06 Sugars, sugar preparations and honey	4.09	0.17
07 Coffee, tea, cocoa, spices, and manufactures thereof	15.60	0.65
08 Feeding stuff for animals (excluding unmilled cereals)	6.36	0.27
09 Miscellaneous edible products and preparations	18.03	0.76
1 Beverages and tobacco	100.00	0.82
11 Beverages	84.22	0.69
12 Tobacco and tobacco manufactures	15.78	0.13
2 Crude materials, inedible, except fuels	100.00	1.20
21 Hides, skins and furskins, raw	0.06	0.00
22 Oil seeds and oleaginous fruits	1.91	0.02
23 Crude rubber (including synthetic and reclaimed)	6.21	0.08
24 Cork and wood	25.30	0.31
25 Pulp and waste paper	6.58	0.08
26 Textile fibres (other than wool tops) and their wastes (not manufactured into yarn or fabric)	4.51	0.05
27 Crude fertilisers other than those of division 56, and crude minerals (excl. coal, petroleum and precious stones)	10.96	0.13
28 Metalliferous ores and metal scrap	31.73	0.38
29 Crude animal and vegetable materials, n.e.s.	12.74	0.15
3 Mineral fuels, lubricants and related materials	100.00	18.41
32 Coal, coke and briquettes	0.19	0.03
33 Petroleum, petroleum products and related materials	93.83	17.28
34 Gas, natural and manufactured	5.99	1.10
4 Animal and vegetable oils, fats and waxes	100.00	0.29
41 Animal oils and fats	6.41	0.02
42 Fixed vegetable fats and oils, crude, refined or fractionated	82.89	0.24
43 Animal or vegetable fats and oils, processed; waxes of animal or vegetable origin; inedible mixtures or preparations, of animal or vegetable fats or oils, n.e.s.	10.69	0.03
5 Chemicals and related products, n.e.s.	100.00	11.36
51 Organic chemicals	13.46	1.53
52 Inorganic chemicals	5.99	0.68
53 Dyeing, tanning and colouring materials	2.60	0.29
54 Medicinal and pharmaceutical products	42.17	4.79
55 Essential oils and resinoids and perfume materials; toilet, polishing and cleansing preparations	7.57	0.86
56 Fertilisers (other than those of group 272)	6.42	0.73
57 Plastics in primary forms	6.60	0.75
58 Plastics in non-primary forms	5.61	0.64
59 Chemical materials and products, n.e.s.	9.59	1.09
6 Manufactured goods classified chiefly by material	100.00	10.98
61 Leather, leather manufactures, and dressed furskins	0.42	0.05
62 Rubber manufactures, n.e.s.	13.52	1.48
63 Cork and wood manufactures (excluding furniture)	2.92	0.32
64 Paper, paperboard, and articles of paper pulp, of paper or of paperboard	11.47	1.26
65 Textile yarn, fabrics, made-up articles, n.e.s., and related products	10.90	1.20
66 Non-metallic mineral manufactures, n.e.s.	10.35	1.14
67 Iron and steel	17.58	1.93
68 Non-ferrous metals	10.65	1.17
69 Manufactures of metals, n.e.s.	22.18	2.43
7 Machinery and transport equipment	100.00	38.46

(a) Standard International Trade Classification, Revision 4.

(b) Indexes for some lower weighted divisions are not available for publication.

(c) Any discrepancies between totals and sums of components are due to rounding.

APPENDIX INDEX STRUCTURES AND WEIGHTING PATTERNS *continued*

IMPORT PRICE INDEX GROUPED BY SITC (REVISION 4)(a)(b)(c) *continued*

SITC	PERCENTAGE CONTRIBUTIONS	
	Divisions to Sections 2011	Divisions and Sections to All Groups 2011
71 Power generating machinery and equipment	5.10	1.96
72 Machinery specialised for particular industries	8.38	3.22
73 Metalworking machinery	0.76	0.29
74 General industrial machinery and equipment, n.e.s., and machine parts, n.e.s.	11.88	4.57
75 Office machines and automatic data processing machines	10.58	4.07
76 Telecommunications and sound recording and reproducing apparatus and equipment	13.41	5.16
77 Electrical machinery, apparatus, appliances, n.e.s., and parts thereof (including non-electrical counterparts, n.e.s., of electrical household-type equipment)	14.01	5.39
78 Road vehicles (including air-cushion vehicles)	30.15	11.60
79 Other transport equipment	5.73	2.20
8 Miscellaneous manufactured articles	100.00	11.86
81 Prefabricated buildings; sanitary, plumbing, heating and lighting fixtures and fittings, n.e.s.	3.55	0.42
82 Furniture and parts thereof; bedding, mattresses, mattress supports, cushions and similar stuffed furnishings	10.12	1.20
83 Travel goods, handbags and similar containers	2.98	0.35
84 Articles of apparel and clothing accessories	21.56	2.56
85 Footwear	5.14	0.61
87 Professional, scientific and controlling instruments and apparatus, n.e.s.	18.35	2.18
88 Photographic apparatus, equipment and supplies and optical goods, n.e.s.; watches and clocks	5.33	0.63
89 Miscellaneous manufactured articles, n.e.s.	32.96	3.91
9 Commodities and transactions not classified elsewhere in the SITC	100.00	2.40
97 Gold, non-monetary (excluding gold, ores and concentrates)	100.00	2.40

(a) Standard International Trade Classification, Revision 4.

(b) Indexes for some lower weighted divisions are not available for publication.

(c) Any discrepancies between totals and sums of components are due to rounding.

APPENDIX INDEX STRUCTURES AND WEIGHTING PATTERNS *continued*

EXPORT PRICE INDEX GROUPED BY SITC (REVISION 4)(a)(b)(c)

SITC		PERCENTAGE CONTRIBUTION	
		Division to Sections 2011	Divisions and Sections to All Groups 2011
0	Food and live animals	100.00	9.74
00	Live animals other than animals of division 03	5.12	0.50
01	Meat and meat preparations	29.49	2.87
02	Dairy products and birds' eggs	9.66	0.94
03	Fish (not marine mammals), crustaceans and molluscs, and aquatic invertebrates and preparations thereof	4.19	0.41
04	Cereals and cereal preparations	27.50	2.68
05	Vegetables and fruit	6.49	0.63
06	Sugars, sugar preparations and honey	8.55	0.83
07	Coffee, tea, cocoa, spices and manufactures thereof	1.24	0.12
08	Feeding stuff for animals (not including unmilled cereals)	4.24	0.41
09	Miscellaneous edible products and preparations	3.53	0.34
1	Beverages and tobacco	100.00	0.96
11	Beverages	94.55	0.91
12	Tobacco and tobacco manufactures	5.45	0.05
2	Crude Materials, inedible, except fuels	100.00	35.92
21	Hides, skins and furskins, raw	0.97	0.35
22	Oil seeds and oleaginous fruits	0.96	0.34
23	Crude rubber (including synthetic and reclaimed)	0.02	0.01
24	Cork and wood	1.34	0.48
25	Pulp and waste paper	0.29	0.11
26	Textile fibres (other than wool tops and other combed wool) and their wastes (not manufactured into yarn or fabric)	4.54	1.63
27	Crude fertilisers, other than those of division 56, and crude minerals (excluding coal, petroleum and precious stones)	0.99	0.36
28	Metalliferous ores and metal scrap	90.61	32.55
29	Crude animal and vegetable materials, n.e.s.	0.27	0.10
3	Mineral fuels, lubricants and related materials	100.00	27.74
32	Coal, coke and briquettes	65.48	18.16
33	Petroleum, petroleum products and related materials	18.45	5.12
34	Gas, natural or manufactured	16.07	4.46
4	Animal and vegetable oils, fats and waxes	100.00	0.21
41	Animal oils and fats	66.19	0.14
42	Fixed vegetable fats and oils, crude, refined or fractionated	31.59	0.07
43	Animal or vegetable fats and oils, processed; waxes of animal or vegetable origin; inedible mixtures or preparations of animal or vegetable fats or oils, n.e.s.	2.23	0.00
5	Chemicals and related products n.e.s.	100.00	3.51
51	Organic chemicals	2.13	0.07
52	Inorganic chemicals	8.10	0.28
53	Dyeing, tanning and colouring materials	8.37	0.29
54	Medicinal and pharmaceutical products	49.09	1.72
55	Essential oils and resinoids and perfume materials; toilet, polishing and cleaning preparations	7.88	0.28
56	Fertilisers (other than those of group 272)	4.51	0.16
57	Plastics in primary forms	4.86	0.17
58	Plastics in non-primary forms	4.07	0.14
59	Chemical materials and products, n.e.s.	10.98	0.39
6	Manufactured goods classified chiefly by material	100.00	7.83
61	Leather, leather manufactures, n.e.s., and dressed furskins	1.57	0.12
62	Rubber manufactures, n.e.s.	1.03	0.08
63	Cork and wood manufactures (excluding furniture)	0.75	0.06
64	Paper, paperboard and articles of paper pulp, of paper or of paperboard	4.25	0.33
65	Textile yarn, fabrics, made-up articles, n.e.s., and related products	1.56	0.12
66	Non-metallic mineral manufactures, n.e.s.	5.31	0.42
67	Iron and steel	13.15	1.03

(a) Standard International Trade Classification, Revision 4.

(b) Indexes for some lower weighted divisions are not available for publication.

(c) Any discrepancies between totals and sums of components are due to rounding.

APPENDIX INDEX STRUCTURES AND WEIGHTING PATTERNS *continued*

EXPORT PRICE INDEX GROUPED BY SITC (REVISION 4)(a)(b)(c) *continued*

SITC	PERCENTAGE CONTRIBUTION	<i>Divisions and Sections to All Groups</i>
	<i>2011</i> <i>2011</i>
68 Non-ferrous metals	67.25	5.26
69 Manufactures of metals, n.e.s.	5.12	0.40
7 Machinery and transport equipment	100.00	5.07
71-75 Industrial and office machinery	45.78	2.32
76-77 Telecommunications, sound and electrical equipment n.e.s.	20.23	1.03
78 Road vehicles (including air-cushion vehicles)	22.36	1.13
79 Other transport equipment	11.63	0.59
8 Miscellaneous manufactured articles	100.00	2.01
81-82 Prefabricated buildings, building fittings and furniture	4.97	0.10
83 Travel goods, handbags and similar containers	0.75	0.02
84 Articles of apparel and clothing accessories	4.66	0.09
85 Footwear	1.09	0.02
87 Professional, scientific and controlling instruments and apparatus n.e.s.	39.63	0.80
88 Photographic apparatus, equipment and supplies and optical goods n.e.s., watches and clocks	5.50	0.11
89 Miscellaneous manufactured articles n.e.s.	43.40	0.87
9 Commodities and transactions not classified elsewhere in the SITC	100.00	7.02
93 Special transactions and commodities not classified according to kind	10.37	0.73
96 Coin (other than gold coin), not being legal tender	3.64	0.26
97 Gold, non-monetary (excluding gold ores and concentrates)	85.99	6.03

-
- | | |
|---|---|
| <p>(a) Standard International Trade Classification, Revision 4.</p> <p>(b) Indexes for some lower weighted divisions are not available for publication.</p> | <p>(c) Any discrepancies between totals and sums of components are due to rounding.</p> |
|---|---|

FOR MORE INFORMATION . . .

INTERNET **www.abs.gov.au** the ABS website is the best place for data from our publications and information about the ABS.

INFORMATION AND REFERRAL SERVICE

Our consultants can help you access the full range of information published by the ABS that is available free of charge from our website. Information tailored to your needs can also be requested as a 'user pays' service. Specialists are on hand to help you with analytical or methodological advice.

PHONE 1300 135 070

EMAIL client.services@abs.gov.au

FAX 1300 135 211

POST Client Services, ABS, GPO Box 796, Sydney NSW 2001

FREE ACCESS TO STATISTICS

All statistics on the ABS website can be downloaded free of charge.

WEB ADDRESS www.abs.gov.au